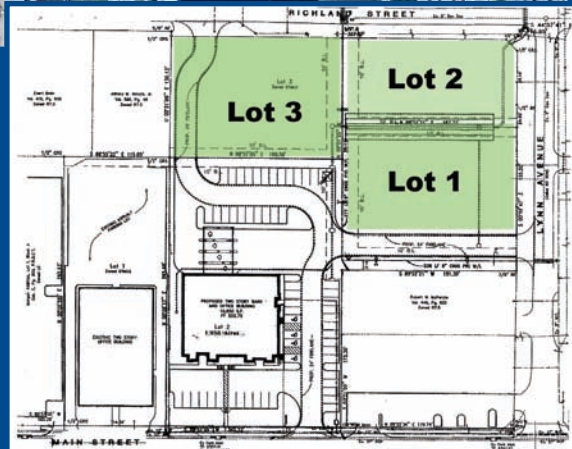




Richland St and Lynn Ave



Three pad sites ready for development at the Corner of Richland Street and Lynn Avenue in Old Town.



These three pad sites are separately platted, zoned Old Town Mixed Use-2 and are priced at \$12.75 per sq. ft.

The pads measure -

- 0.67 acres at 29,198 sq. ft.,
- 0.407 acres at 17,729 sq. ft.
- 0.575 acres at 25,047 sq. ft.

They are contiguous to Northstar Bank and share access drives through to Main Street.

Richland St and Lynn Ave Lewisville



for more information contact:

Todd Weaver
2901 Corporate Circle
Flower Mound, TX 75028

todd@weavercommercial.com
469-635-2833 Office
469-635-2849 Fax